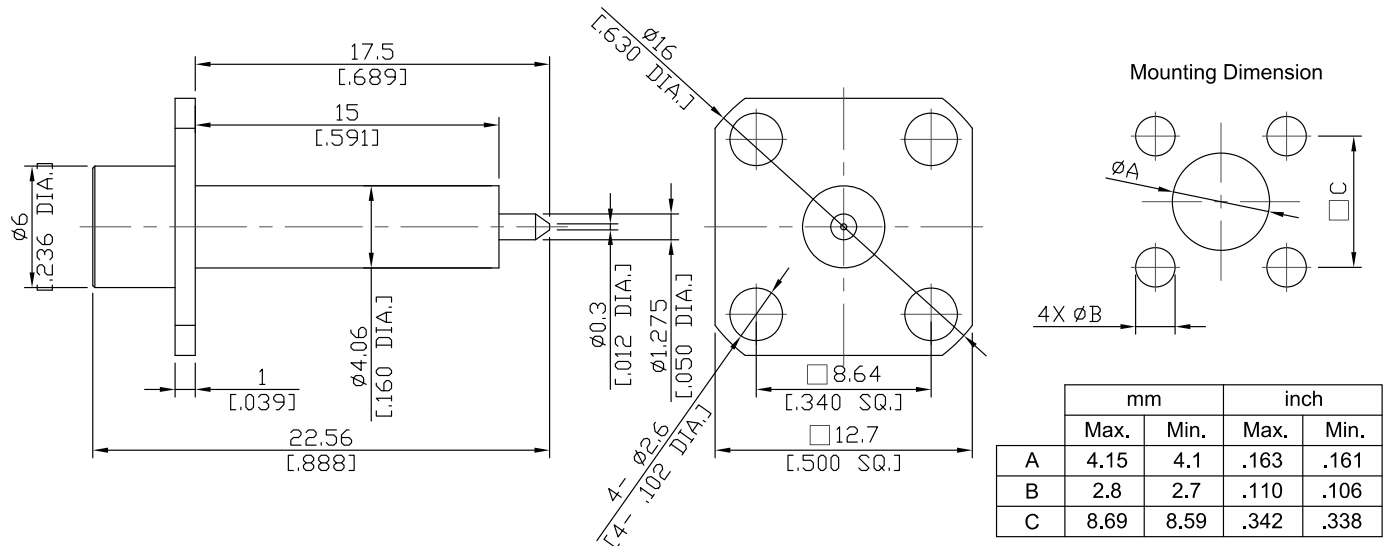


SMP Smooth Bore Plug (Male) Connector, Solder Attachment, 4-Hole Flange Mount, Stub Terminal, 8.64 mm (.340 inch) Hole Spacing, DC - 12 GHz, VSWR ≤ 1.20

## SMPSB1GFA50-2256A / 9X



All dimensions are in mm [inch]

Tolerances according to DIN ISO 2768-mH

### Interface

According to

MIL-PRF-31031; MIL-STD-348B/326; IEC 61169-44

### Electrical Data

Impedance	50 Ω
Frequency	DC to 12 GHz
VSWR (Return Loss)	≤ 1.2 (≥ 20.83 dB)
Insertion Loss	≤ 0.1 x √f (GHz) dB
Insulation Resistance	≥ 5 GΩ
Center Contact Resistance	≤ 6.0 mΩ
Outer Contact Resistance	≤ 2.0 mΩ
Working Voltage (at sea level)	335 V rms

-VSWR in application depends decisive on cable assembly process-

### Material And Plating

Piece Parts	Material	Plating
Centre contact	Beryllium Copper	Gold plating (Non-magnetic nickel-phosphorus underplating)
Body	Stainless Steel	Passivated
Insulator	PTFE	

SMP Smooth Bore Plug (Male) Connector, Solder Attachment, 4-Hole Flange Mount, Stub Terminal, 8.64 mm (.340 inch) Hole Spacing, DC - 12 GHz, VSWR ≤ 1.20

## SMPSB1GFA50-2256A / 9X

### Mechanical Data

Coupling mechanisms	Snap-lock
Mating Cycles	≥ 1000
Center contact captivation	≥ 7 N
Engagement force - Smooth Bore	max. 9 N
Disengagement force- Smooth Bore	min. 2.2 N

### Environmental Data

Temperature Range	-65°C to +165°C
Thermal shock	MIL-STD-202, Method 107, Condition B
Vibration	MIL-STD-202, Method 204, Condition B
Shock	MIL-STD-202, Method 213, Condition A
Moisture Resistance	MIL-STD-202, Method 106
RoHS	compliant

### Packing

Single or 100